

Mapbender3

Christian Wygoda

FOSSGIS Dessau 2012

Christian Wygoda

- Mapbender3 Developer Team
- PSC (Project Steering Committee)

WhereGroup Bonn <http://www.wherogroup.com>



Der große Knall oder...



... ein Staffellauf?

Mapbender 2

Entwicklung & Support

Support

Entwicklung & Support

Mapbender 3

Grundlegende Änderungen

- Neuentwicklung mit Architekturwechsel
- Web Application Framework
 - Symfony2 & Doctrine
- JavaScript-Framework
 - OpenLayers
 - jQuery & jQuery UI
 - MapQuery





Basis-Demo

Map Click

Map Box



TOC

About



Table of Contents

- ▼ ☒ Mapbender Users
 - ☒ Name
 - ☒ User
- ▶ ☒ OpenStreetMap Roads
- ▶ ☒ Natural Earth

Suche nach Karten:

Karte suchen

Ort suchen

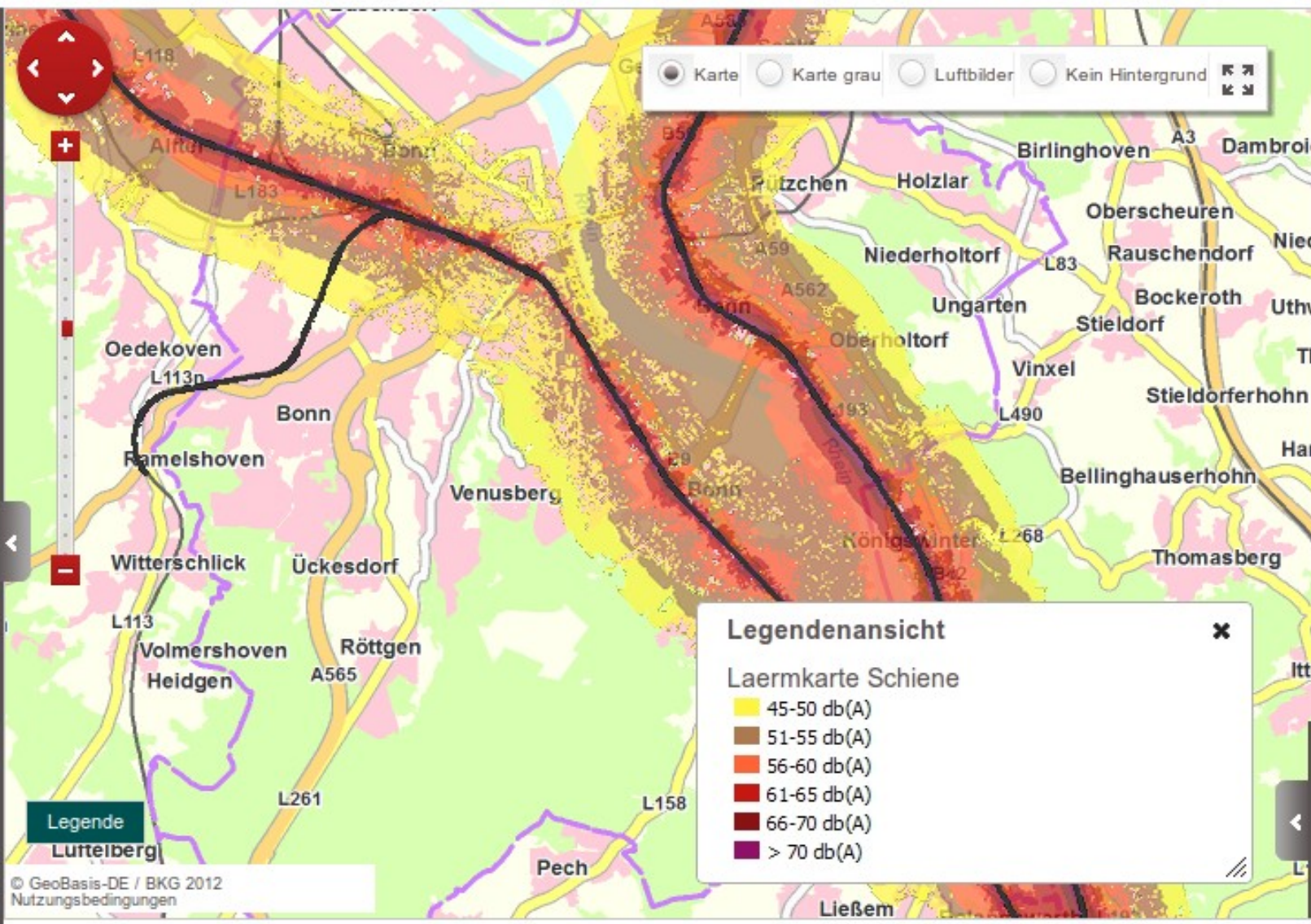
Navigation icons: back, forward, home, search, print, scale, XY

Auswählbare Ebenen (2)

- ☒ Eisenbahntrasse
- ☒ Laermkarte Schiene

Legende

© GeoBasis-DE / BKG 2012
Nutzungsbedingungen



Symfony

- Strikt objektorientiertes PHP-Framework
- Auf Geschwindigkeit optimiert
 - Eingebauter Klassencache
 - PHP-APC ready
- Bausteinphilosophie
 - Symfony Components
 - Doctrine, Twig, Monolog...
- Keine JavaScript-Vorgaben

Stand der Dinge – MapbenderCoreBundle

- Mapbender API
 - Applications
 - Elements
 - Services/Layers
- (OWS)-Proxy

Stand der Dinge - MapbenderWm(t)sBundle

- Nutzung von WMS- und WMTS-Diensten
- Parsen von GetCapabilities-Dokumenten
- JavaScript-Funktionalität

Stand der Dinge - MapbenderManagerBundle

- **Verwaltungsbackend**
 - **Anwendungsverwaltung**
 - **Diensteverwaltung**
 - **Benutzerverwaltung**
- **Problemspezifische Oberflächen und Formulare**
- **Fallback auf generische Formulare**



Applications

Services

Users

Settings

You're logged in as *user*:

Your Account

Logout

Applications

| Title (Slug) | Description | Actions | | | |
|---------------------------------|---------------------|----------------------|----------------------|-----------------------|------------------------|
| Demo B (demo-b) | Another little demo | View | Edit | Clone | Delete |
| Demo C (demo-c) | | View | Edit | Clone | Delete |
| Demo A (demo-a) | Description A | View | Edit | Clone | Delete |

Create new application

Demo A

Required fields are

Base data

El

Top

Add element

Title

↑↓

Area ru

Content

Add ele

Title

↑↓

Map

Update

Delete

Select element class

x

About dialog

Renders a button to show a about dialog

Area ruler

Ruler to measure area

Button

Renders a button

FeatureInfo

Renders a button to trigger a feature info request and popup

Line ruler

Ruler tool to measure distance

Map

OpenLayers based map

Table of contents

Table of contents listing map layers

WMC Storage

Close

Select Element



Applications

Services

Users

Settings

You're logged in as *user*.

Your Account

Logout

Demo A

Required fields are marked with dark labels, while optional fields have lighter labels.

[Base data](#)

[Elements](#)

[Layersets](#)

[Permissions](#)

Top

[Add element...](#)

| | Title | Type | Actions |
|----|-------------|------------|---|
| ↑↓ | Area ruler2 | Area ruler | Edit Delete |

Content

[Add element...](#)

| | Title | Type | Actions |
|----|-------|------|---|
| ↑↓ | Map | Map | Edit Delete |

[Update](#)

[Delete](#)

[Cancel](#)

Sie finden uns...

- mapbender3.org
- github.com/mapbender
- osgeo.org/mapbender
- Am Stand der WhereGroup... ;)

Vielen Dank für die Aufmerksamkeit.