

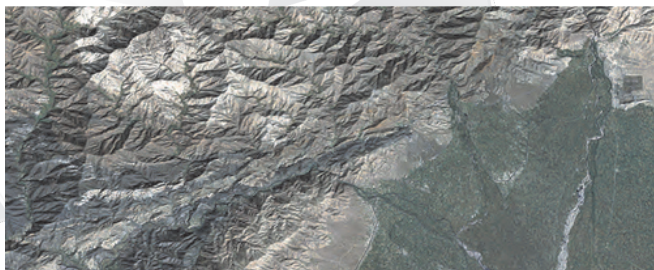
GDAL/OGR

Geospatial Data Abstraction Library (GDAL/OGR) is a cross platform C++ translator library for raster and vector geospatial data formats that is released under an X/MIT style Open Source license by the Open Source Geospatial Foundation. As a library, it presents a single abstract data model to the calling application for all supported formats. It also comes with a variety of useful commandline utilities for data translation and processing.

GDAL supports over 50 raster formats, and OGR over 20 vector formats.

It provides the primary data access engine for many applications including MapServer, GRASS, QGIS, and OpenEV. It is also utilized by packages such as OSSIM, Cadcorp SIS, FME, Google Earth, VTP, Thuban, ILWIS, MapGuide and ArcGIS. GDAL/OGR is **the** most widely used geospatial data access library.

Professional support options are available for commercial software developers desiring assistance integrating and extending GDAL, or dig in yourself and join the development team!



Features

- Library access from Python, Java, C#, Ruby, VB6 and Perl
- Vector data model closely aligned with OGC Simple Features
- Coordinate system engine built on PROJ.4 and OGC Well Known Text coordinate system descriptions
- Utilities for data translation, image warping, subsetting, and various other common tasks
- Highly efficiency raster data access, taking advantage of tiling and overviews
- Support for large files - larger than 4GB

Popular Formats

Raster

GeoTIFF
NITF
Erdas Imagine (.img)
SDTS
HDF
ESRI Grids
ECW
MrSID
JPEG2000
DTED

Vector

Shapefile
MapInfo (mid/mif and .tab)
ESRI Coverages
ESRI Personal Geodatabase
DGN
GML
PostGIS
Oracle Spatial
MySQL Spatial



OSGeo
Your Open Source Compass

Visit our website: <http://www.osgeo.org/gdal>

©2007 Open Source Geospatial Foundation (updated May 2007)

Incubating OSGeo Project

