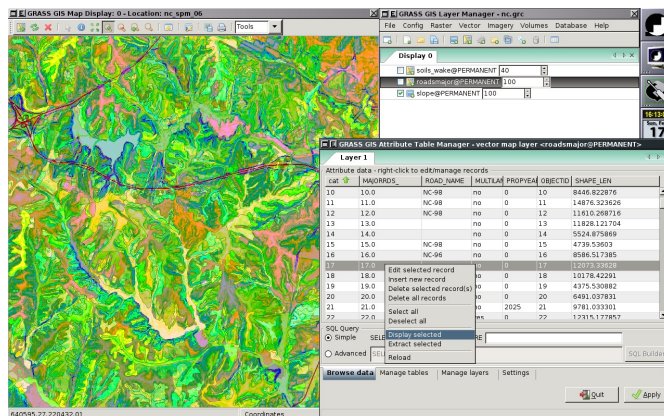


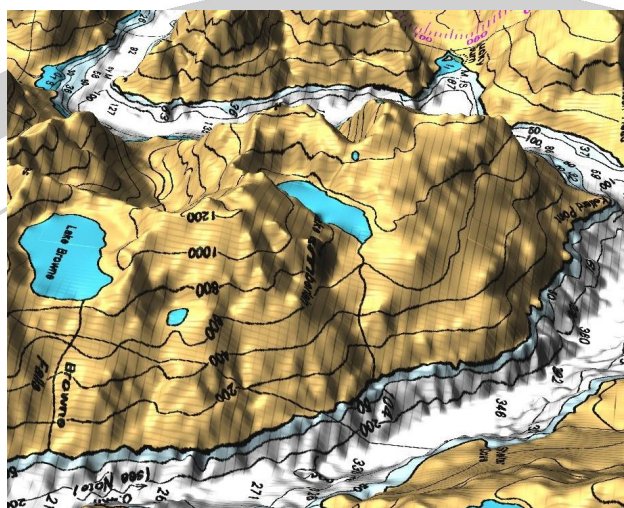


GRASS GIS

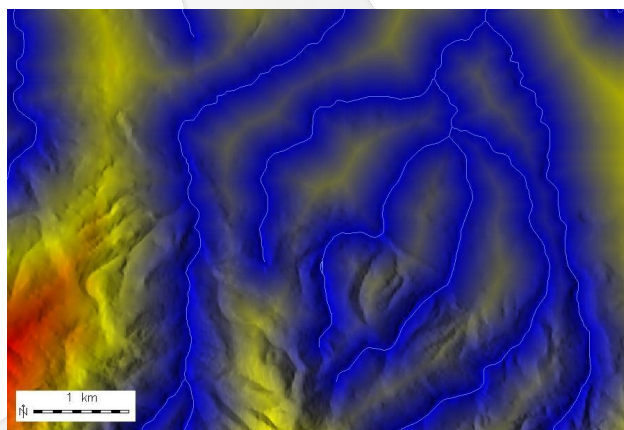
GRASS (Geographic Resources Analysis Support System) is the most comprehensive open source GIS, licensed under the GNU GPL. It consists of more than 350 modules to process vector (2D/3D), raster and voxel data. GRASS offers various interfaces to external applications such as geostatistical software, (spatial) databases and map servers. It can be used as a desktop GIS or as a backbone of a complete spatial data infrastructure.



GRASS wxPython GUI with attribute table manager



Elevation model with overlaid topographic map in 3D-viewer



Cost analysis: Calculating distances to watercourses

Core Features

- 2D raster and image processing and 3D voxel (volume) management
- 2D/3D vector analysis with SQL-based DBMS support
- Vector network analysis
- Georeferencing and orthophoto creation
- Various interpolation methods
- Usage via graphical user interface or via command line
- Support for all common raster and vector formats and interfaces to external GIS-related software.
- Platform independent, can be used under GNU/Linux, Mac OSX, MS Windows and other POSIX-compatible platforms
- Modular architecture
- Support of automated processing in batch mode
- Programmable to work as OGC Web Processing Service (WPS)

