



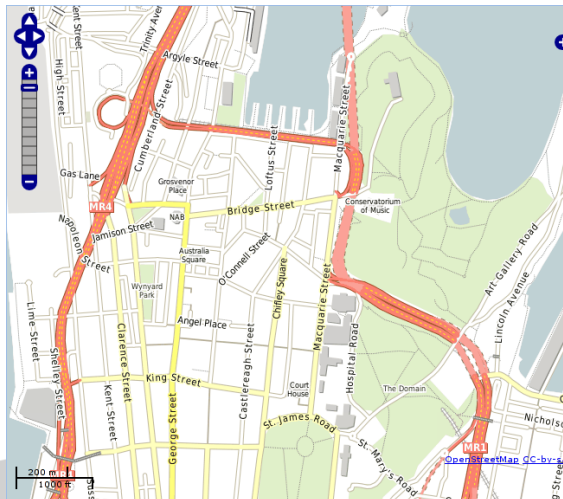
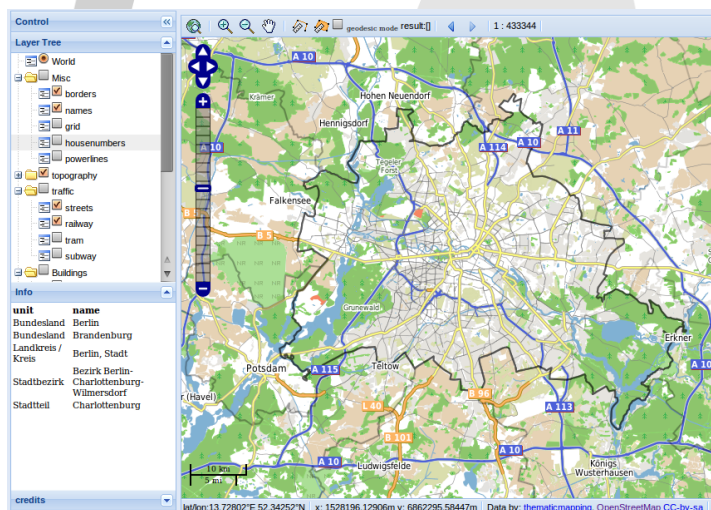
# MapServer

open source web mapping

MapServer is an open source development environment for building spatially-enabled interactive web mapping applications and services. It is fast, flexible, reliable and can be integrated into just about any GIS environment. Originally developed at the University of Minnesota, MapServer is now maintained by developers around the world.

MapServer runs on all major operating systems and will work with almost any web server. MapServer features MapScript, a powerful scripting environment that supports many popular languages including PHP, Python, Perl, C# and Java. Using MapScript makes it fast and easy to build complex geospatial web applications.

MapServer is supported by a vibrant user community so help is just an email away. Because MapServer is open source you get the source code so it is possible to extend the software to exactly meet your needs.



## Features

- Supports industry standard data formats and spatial databases
- On-the-fly feature classification
- Sophisticated rule-based labeling
- Output options: all sorts of raster images, PDF, SWF, SVG and templated text
- Plugin architecture for input and output
- On-the-fly projection for both raster and vector data
- Provides a wide variety of spatial and attribute-based queries
- Supports popular Open Geospatial Consortium (OGC) standards including WMS, WFS, WCS, SLD and SOS
- Leverages other OSGeo projects including GDAL, GEOS, PostGIS, PROJ.4
- Integrates with popular front-end environments such as ka-Map, Mapbender, p.mapper, GeoMoose, Cartoweb, OpenLayers and MapFish

