

Mapbender - an introduction to the Mapbender project

Astrid Emde
CCGIS Bonn (Germany)



OSGeo.org
The Open Source
Geospatial Foundation

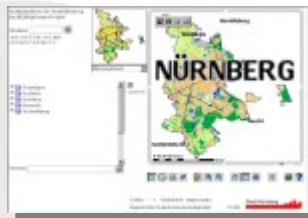
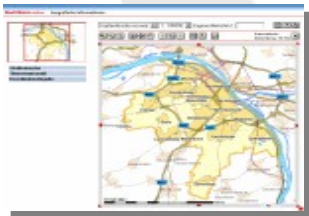
Mapbender Presentation

- What is Mapbender ?
- History of the project
- Software requirements
- Project organisation
- Survey of the Mapbender functionality
- Project solutions
- View to the future

http://www.mapbender.org/index.php/User:Astrid_Emde

What is Mapbender ?

- Mapbender is a Client Suite to manage spatial data services
- OGC OWS Services (WMS, WFS, WMC)



<http://www.mapbender.org/index.php/Gallery>

What is Mapbender ?

- Programming in HTML, JavaScript and PHP
- Using MySQL or PostgreSQL as administrative database
- Modular organisation of the code
- Management interface for gui (graphical user interface), user, group and service administration
- Authentication and authorization services
- Secure service access by OWS proxy functionality

What is Mapbender ?

- Providing interfaces for displaying, navigating and querying WMS services
- Web-based digitizing and editing functionality (WFS-T)
- Gazetteer based on WFS or SQL-search
- Highlight functionality
- PDF-print for Din A4, Din A3, Din A2, highquality print
- Easy to integrate in CMS

<http://www.mapbender.org/index.php/Modules>

Mapbender history

- Project started in 2001 at CCGIS (Bonn, Germany) with the name **CCGIS Client Suite** optimized for SICAD SD-IMS using WMS standards
- August 2003 GNU GPL License, the name Mapbender was invented, registration on sourceforge.net
- 2005 using cvs on sourceforge
- 2006 svn and release download on osgeo.org
- July 2006 affiliation as first official OSGeo project
- Actual version Mapbender 2.4 (31/07/2006)

http://www.mapbender.org/index.php/Development_History

Software Requirements

- Web Server (Apache)
- PHP
- Administrative database:
 - PostgreSQL (PostGIS)
 - MySQL
- Browser
 - Mozilla
 - Internet Explorer



http://www.mapbender.org/index.php/Installation_en

Project Organisation

- OSGeo project <https://mapbender.osgeo.org>
- Growing developer team
- Expanding Mapbender user: [user map](#)
- Wiki <http://www.mapbender.org>
- Bug tracking on sourceforge.net
- Mailing lists (english / german)
 - users@mapbender.osgeo.org
 - dev@mapbender.osgeo.org
- irc communication <irc://irc.freenode.net#mapbender>
- Birds of a feather meetings at fairs, FOSSGIS
- Function bazaar

Mapbender Project Solutions

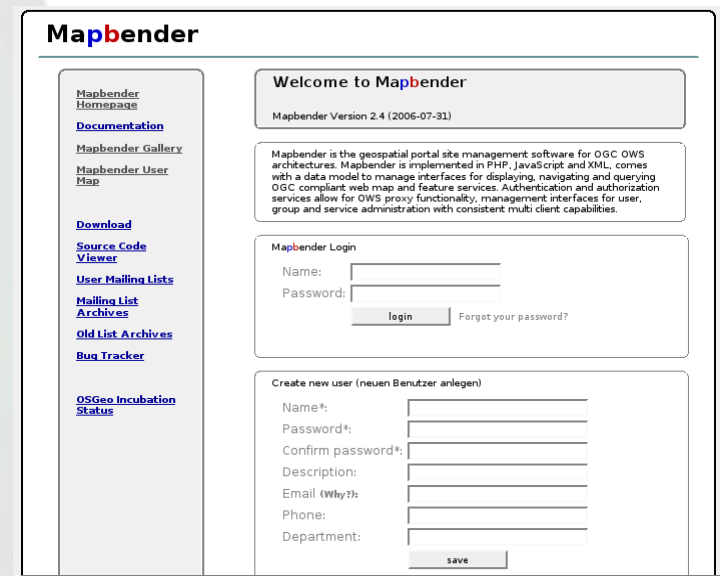
- city map service of Mainz
- city map of Regensburg
- Mapbender on FOSS4G - digitize your own waypoints
- Agricultural Information and Online Subsidy Grant Request System
- Portal U
- mapbender_dev (demo installation)
- <http://www.mapbender.org/index.php/FLOrlp>
- <http://www.mapbender.org/index.php/Gallery>

Get to know Mapbender

Make your own experiences with Mapbender !

http://wms1.ccgis.de/mapbender_dev/

You can create your own account and test the Mapbender functionality.



The screenshot displays the Mapbender web interface. On the left is a navigation menu with links: [Mapbender Homepage](#), [Documentation](#), [Mapbender Gallery](#), [Mapbender User Map](#), [Download](#), [Source Code Viewer](#), [User Mailing Lists](#), [Mailing List Archives](#), [Old List Archives](#), [Bug Tracker](#), and [OSGeo Incubation Status](#). The main content area is titled "Mapbender" and contains three sections: "Welcome to Mapbender" (version 2.4, 2006-07-31), a descriptive paragraph about the software, a "Mapbender Login" form with fields for Name and Password, a "login" button, and a "Forgot your password?" link; and a "Create new user (neuen Benutzer anlegen)" form with fields for Name*, Password*, Confirm password*, Description, Email (Why?), Phone, and Department, along with a "save" button.

Mapbender – Future Development

- Evaluation of OpenLayers integration (BOF)
- SDL integration, SLD Editor
- Advanced WFS administration
- Advancement of the digitize functionality
- Google-like search, Metadata handling
- Gazetteer Services
- Input and output of KML
- GeoRSS

<http://www.mapbender.org/index.php/Development>

Thank you for your attention !

If you have any questions contact me

Astrid Emde



0049 (0)228 90 826 19

astrid_emde@osgeo.org

At the FOSS4G 2006 booth A (OSGeo)
or 10 (Geo-Consortium)