



Mapbender3 Workshop

Astrid Emde
FOSS4G 2016 Bonn

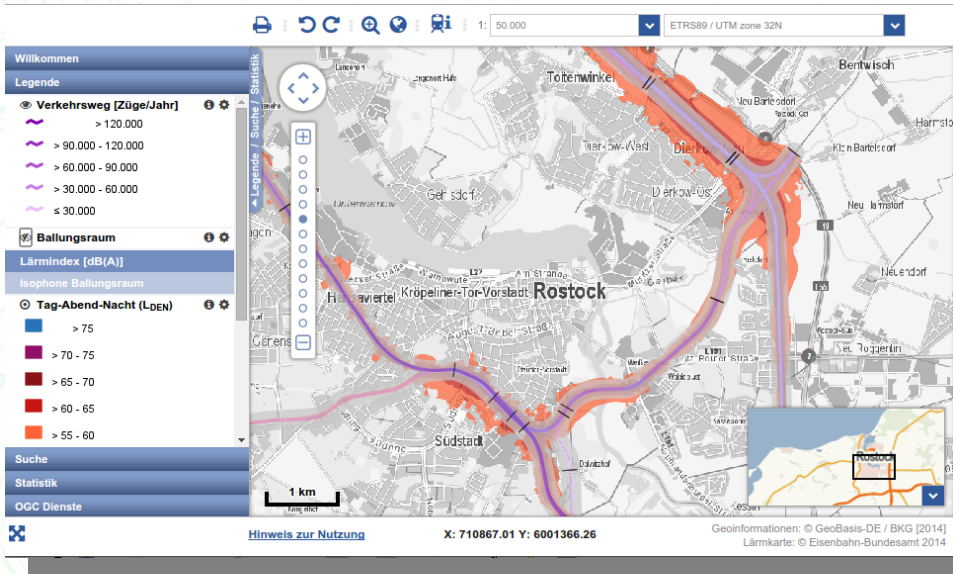


Mapbender Developer Team

- Astrid Emde
- Mapbender Developer Team since 2004
- Mapbender PSC (Project Steering Committee)
- Project management and development, Trainings for MapServer, PostgreSQL/PostGIS, Mapbender, GeoServer
- Testing, Documentation, Release
- **WhereGroup** Bonn



WhereGroup



Willkommen

Legende

- Verkehrsweg [Züge/Jahr]
 - > 120.000
 - > 60.000 - 120.000
 - > 30.000 - 60.000
 - ≤ 30.000
- Ballungsraum
 - Lärmindex [dB(A)]
 - > 75
 - > 70 - 75
 - > 65 - 70
 - > 60 - 65
 - > 55 - 60

Suche

Statistik

OGC Dienste

Hinweis zur Nutzung X: 710867.01 Y: 6001366.26 Geoinformationen: © GeoBasis-DE / BKG [2014] Lärmkarte: © Eisenbahn-Bundesamt 2014



Klarschiff HRO

Stadtplan Luftbild

Adressensuche

Stadtteil/Straße/Adresse eingeben...

neue Meldung

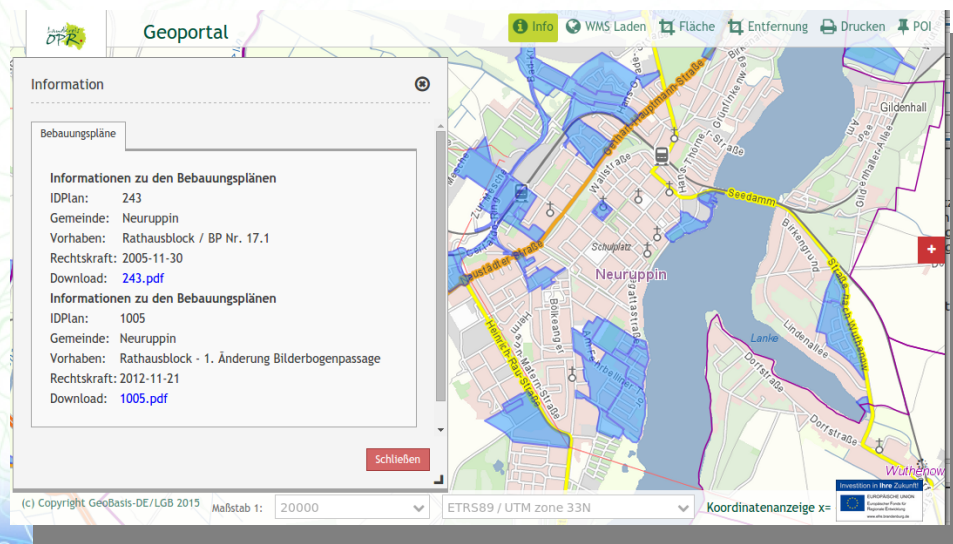
Beobachtungsflächen

Kartenelemente

Hilfe und Impressum

Startseite

Kartenbild © Hansestadt Rostock (CC BY 3.0) | Kartendaten © OpenStreetMap (ODBL) und uVGB-MV



Geoportal

Information

Bebauungspläne

Informationen zu den Bebauungsplänen

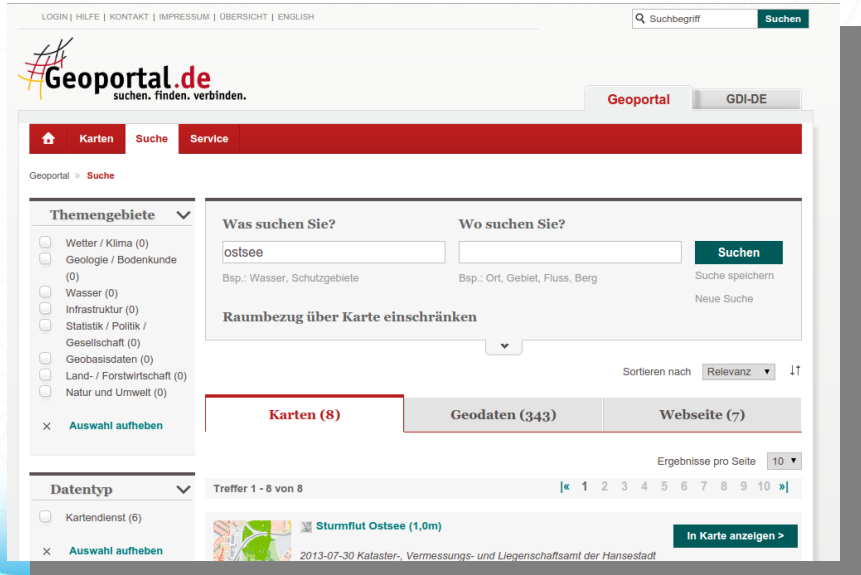
IDPlan: 243
Gemeinde: Neuruppin
Vorhaben: Rathausblock / BP Nr. 17.1
Rechtskraft: 2005-11-30
Download: 243.pdf

Informationen zu den Bebauungsplänen

IDPlan: 1005
Gemeinde: Neuruppin
Vorhaben: Rathausblock - 1. Änderung Bilderbogenpassage
Rechtskraft: 2012-11-21
Download: 1005.pdf

Schließen

(c) Copyright GeoBasis-DE/LGB 2015 Maßstab 1: 20000 ETRS89 / UTM zone 33N Koordinatenanzeige x=



LOGIN | HILFE | KONTAKT | IMPRESSUM | ÜBERSICHT | ENGLISH

Suchbegriff Suchen

Geoportal.de
suchen. finden. verbinden.

Geoportal GDI-DE

Karten Suche Service

Geoportal » Suche

Themengebiete

- Wetter / Klima (0)
- Geologie / Bodenkunde (0)
- Wasser (0)
- Infrastruktur (0)
- Statistik / Politik / Gesellschaft (0)
- Geobasisdaten (0)
- Land- / Forstwirtschaft (0)
- Natur und Umwelt (0)

Auswahl aufheben

Datentyp

- Kartendienst (6)

Auswahl aufheben

Was suchen Sie? ostsee

Wo suchen Sie?

Suchen

Bsp.: Wasser, Schutzgebiete Bsp.: Ort, Gebiet, Fluss, Berg

Suche speichern

Neue Suche

Raumbezug über Karte einschränken

Sortieren nach Relevanz

Karten (8) Geodaten (343) Webseite (7)

Ergebnisse pro Seite 10

Treffer 1 - 8 von 8

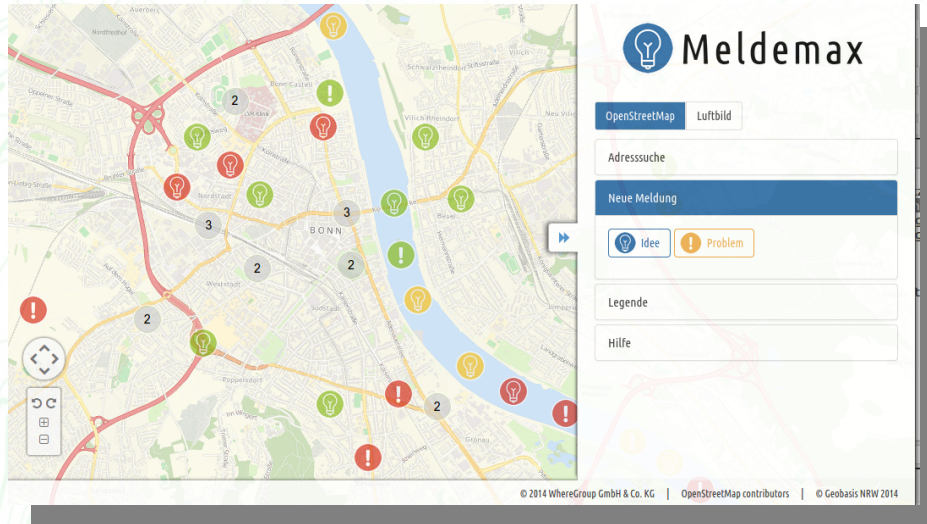
Sturmflut Ostsee (1,0m)

2013-07-30 Kataster-, Vermessungs- und Liegenschaftsamt der Hansestadt

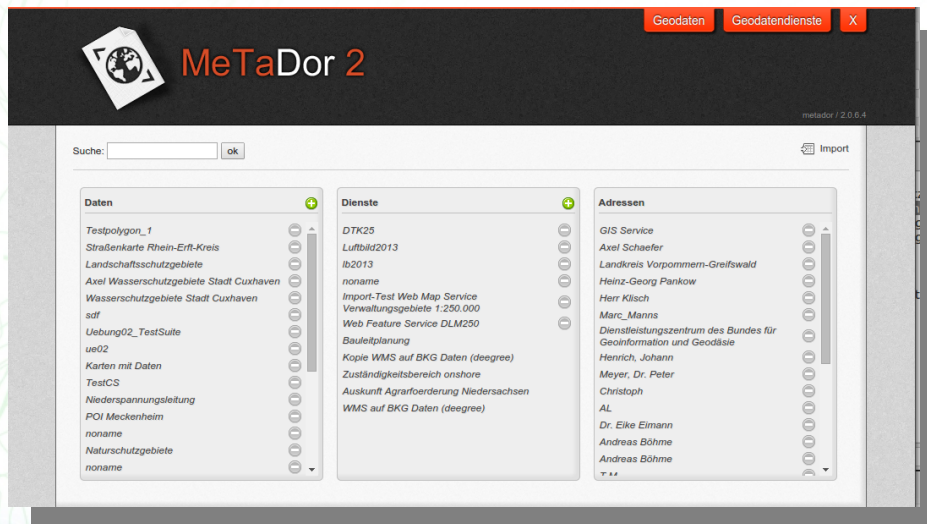
In Karte anzeigen >



WhereGroup



Meldemax
Platform for
ideas & problems
in your town



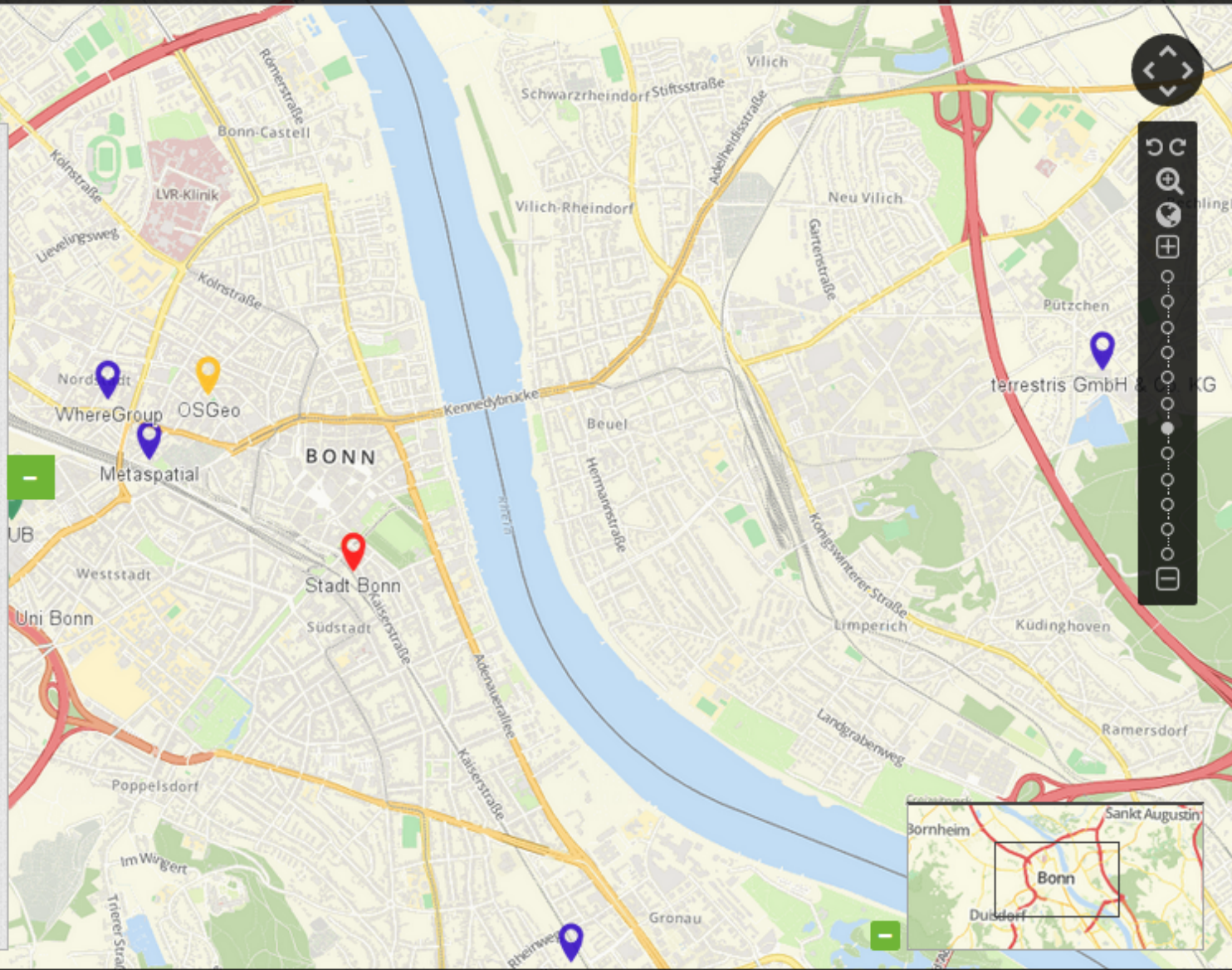
MetaDor2
Metadateneditor

**Consulting, Training
& more**



Layer tree

- Mapbender Users
 - Name
 - User
- OSM Demo



Map navigation controls: Pan, Zoom, Fullscreen, Home, Layer visibility, POI, etc.

Workshop

- Architecture and Installation
- What does Mapbender do?
- Register Services
- Create your own application
- User and group security management
- Design adjustments, template printing
- Search module and digitizer



What does Mapbender do?



WebGIS Client Suite with administration web interface



Create a geoportal without writing a single line of code!



Create and maintain an OWS repository



Distribute configured services among applications



Grant users and groups access to applications and services

Which components does Mapbender3 use?

- **Symfony2** as PHP framework
 - Doctrine, Twig, Monolog, Bootstrap...
 - Bundles
- **OpenLayers2**
- **MapQuery**
- **jQuery**
- **SQLite, PostgreSQL, MySQL, Oracle** database

Systemrequirements

- \geq PHP 5.4 (php5)
- PHP CLI interpreter (php5-cli)
- PHP SQLite extension (php5-sqlite)
- PHP PostgreSQL Erweiterung (php5-pgsql)
- PHP cURL extension (php5-curl)
- PHP Alternative PHP Cache (php-apc)
- PHP Internationalization-extension (php5-intl)
- PHP GD (php5-gd) (Print)
- PHP FileInfo (Print)
- PHP Zip
- APACHE mod_rewrite
- OpenSSL



Mapbender Development Team

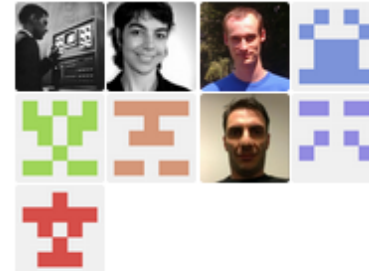
<http://mapbender3.org> mapbender_dev@lists.osgeo.org

Filters

Find a repository...

People

9 >



mapbender-gpsposition

JavaScript ★ 0 📄 0

Updated 6 hours ago

Mapbender3 Code in Git

mapbender-starter

PHP ★ 12 📄 4

Mapbender3 starter project

Updated 7 hours ago

mapbender

PHP ★ 17 📄 10

The PHP web mapping framework

Updated 7 hours ago

mapbender-activityindicator

JavaScript ★ 0 📄 0

Updated 7 hours ago

mapbender-ruler

JavaScript ★ 0 📄 0

Updated 9 hours ago

Installation

- Documentation of the Installation
- Workshop Installation `install_mapbender3.sh` of OSGeo-Live
- Download <http://mapbender3.org/builds/>

Start Mapbender3

- **Symfony2 test configuration**
<http://localhost/mapbender3/config.php>
- **Developer mode**
http://localhost/mapbender3/app_dev.php
- **Productive mode**
<http://localhost/mapbender3/app.php>



Symfony

Welcome!

Welcome to your new Symfony project.

This script will guide you through the basic configuration of your project. You can also do the same by editing the '`app/config/parameters.yml`' file directly.

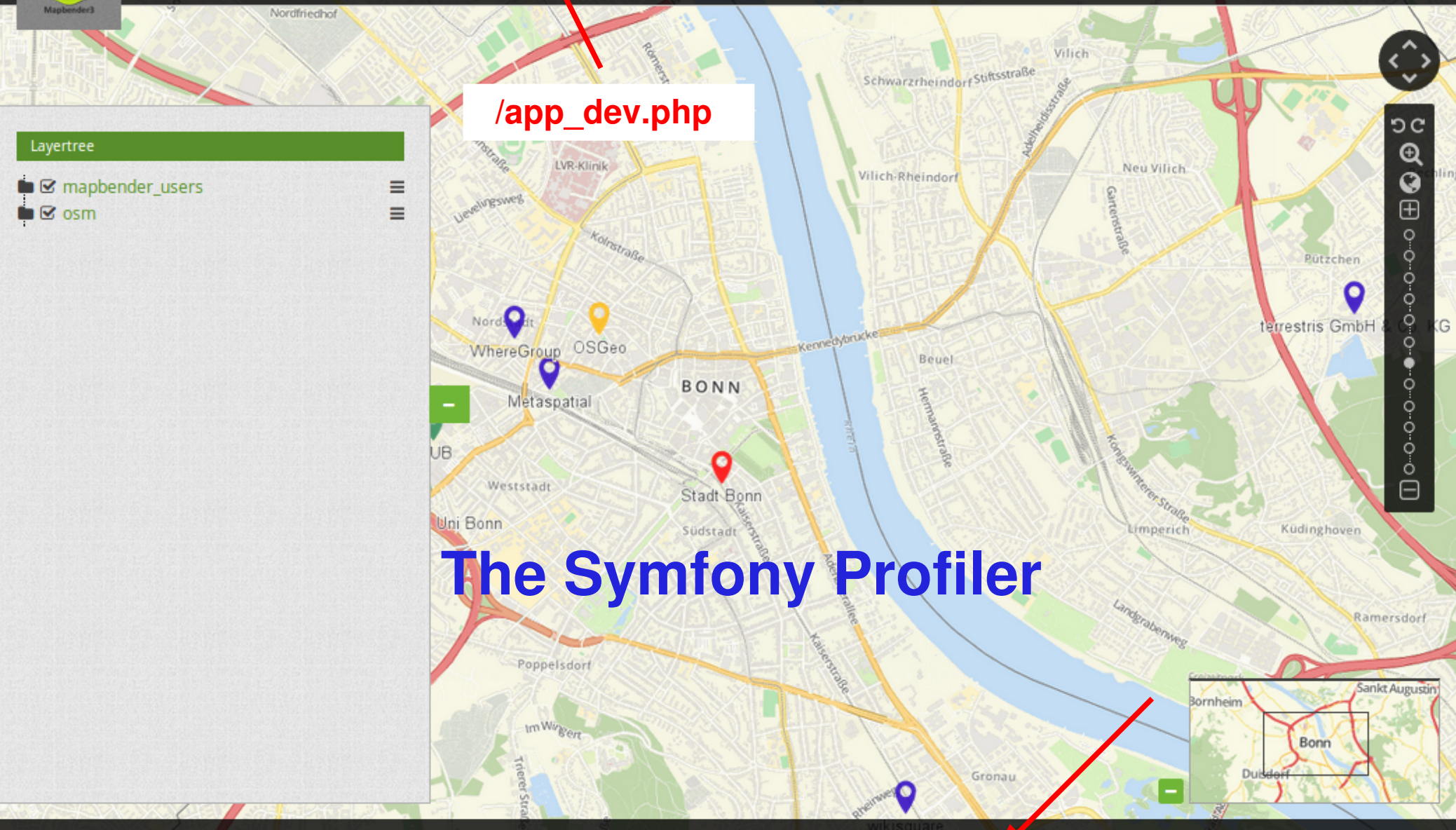
MAJOR PROBLEMS

Major problems have been detected and **must** be fixed before continuing:

1. Set the "`date.timezone`" setting in `php.ini`* (like Europe/Paris).

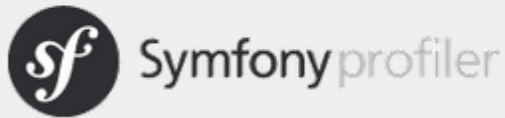
* Changes to the `php.ini` file must be done in "`/etc/php5/apache2/php.ini`".

[Re-check configuration >](#)



/app_dev.php

The Symfony Profiler



Search on Symfony website OK

- CONFIG
- REQUEST**
- EXCEPTION
- EVENTS
- LOGS
- TIMELINE
- ROUTING
- SECURITY
- E-MAILS 0
- DOCTRINE 0 0 MS
- MINIMIZE

View last 10 Profile for: GET http://localhost/mapbender3-release/app_dev.php/application/mapbender_user by 127.0.0.1 at Thu, 09 Jul 2015 23:37:10 +0200

Request GET Parameters

No GET parameters

Request POST Parameters

No POST parameters

Request Attributes

Key	Value
_controller	"Mapbender\\CoreBundle\\Controller\\ApplicationController::applicationAction"
_format	"html"
_route	"mapbender_core_application_application"
_route_params	{"_format":"html","slug":"mapbender_user"}
_template	"Object(Symfony\\Bundle\\FrameworkBundle\\Templating\\TemplateReference)"
_template_default_vars	"Array(0 => slug)"
_template_streamable	"false"
template_vars	"Array()"



Find Mapbender3 on OSGeo-Live?

- ALIAS mapbender3 refers to:
`/var/www/html/mapbender3/web/`
- `app_dev.php` → `mapbender3/web/app_dev.php`
- Mapbender:
`mapbender3/mapbender/src/Mapbender/CoreBundle`

YAML

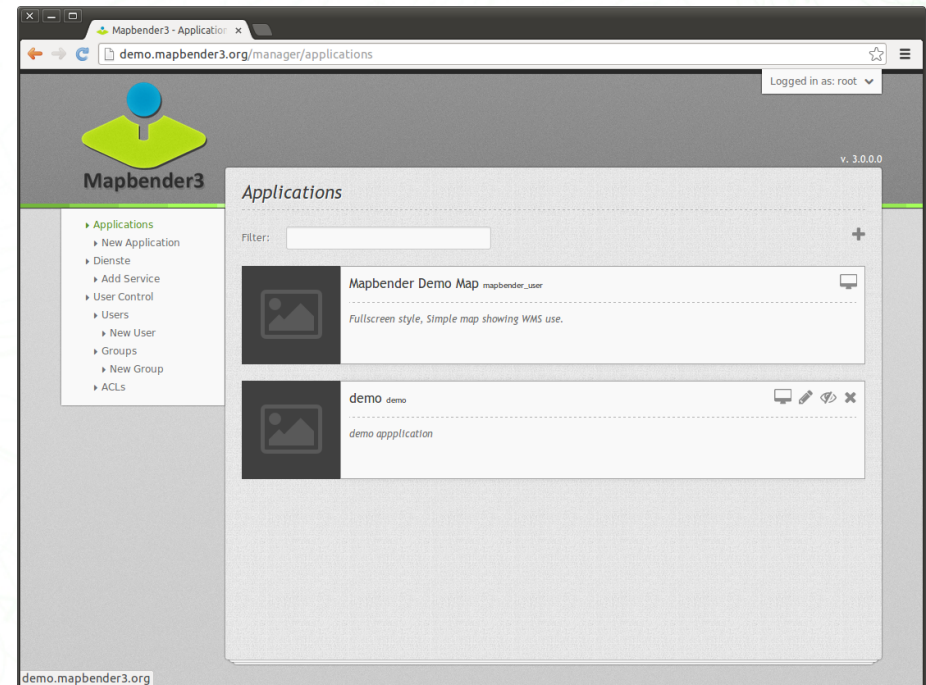
- Symphony configuration in YAML
- Mapbender3 application can be defined in YAML
 - `/app/config/mapbender.yml`
 - Define your application and services
- Mapbender3 configure database, language, mailer & more
 - `parameters.yml`
 - `config.yml`

Mapbender3 database

- PostgreSQL, Sqlite, ORACLE, MySQL, MS SQL
- Tables for WMS, User, Group, Layers etc.
- Doctrine integrated in Symfony provides database abstraction layer

Application Overview

- Application overview
- Call sets Session to Anonymous User
- View title, description, screenshot
- Start Application



Login

- root user is created on installation
- You can provide Register and Forgot password functionality



Login

Username:

Password:

[▶ Register](#) [▶ Forgot password?](#)



Mapbender3

Download

- Home
- Was ist Mapbender3?
- Los geht's
- Dokumentation
- Community
- Galerie

Route

Höhenprofil

Meter ü. NN

300

200

100

0

45 km 90 km 135 km 178.2 km

Radroutenplaner Rheinland-Pfalz: Migration von Version Mapbender2 nach Mapbender3.

Cycle route planner for Rhineland-Palatinate: Migration of Mapbender Version 2 to Mapbender Version 3

<http://www.radwanderland.de/>

Willkommen auf mapbender3.org

Willkommen auf der Mapbender3-Seite

Mapbender ist ein Content Management System für Kartenanwendungen und Geodatendienste. Die Software ist in PHP und JavaScript implementiert. Mapbender wird mit vorkonfigurierten Anwendungen zur Anzeige, Navigation und Abfrage von Karten ausgeliefert. Alle Anwendungen können über die Weboberfläche den eigenen Bedürfnissen angepasst oder komplett neu implementiert werden.

Mapbender3 ist der Nachfolger der erfolgreichen Mapbender Version 2 und basiert auf aktuellen Technologien wie dem Web Application Framework Symfony2, JQuery und OpenLayers.

[Weiterlesen](#)



Open HUB **\$33.8M Cost**

Folgen Sie uns auf Twitter:

[@Mapbender folgen](#)

Welcome to Mapbender3's documentation!

Contents:

- [The Book](#)
 - [Installation](#)
 - [Git-based installation](#)
 - [Using the quick_install.py script](#)
 - [Components](#)
 - [Directory structure in Mapbender3](#)
 - [Concepts](#)
 - [Configuring the database](#)
 - [Translation in Mapbender3](#)
 - [How to create your own Template?](#)
 - [How to change the style of your application with the css-editor?](#)
 - [Mapbender3 Quickstart](#)
 - [Mapbender templates](#)
 - [Glossary](#)
 - [Version history](#)
- [Bundle Documentation](#)
 - [MapbenderCoreBundle](#)
 - [MapbenderWMSBundle](#)
 - [MapbenderWMCBundle](#)
 - [FOMUserBundle - Users and Security](#)
 - [FOMManagerBundle -Using the FOM Manager](#)
 - [OwsProxy3CoreBundle](#)
 - [How to create a Bundle?](#)
- [The Developer's Book](#)
 - [Introduction](#)

Table Of Contents

- [Welcome to Mapbender3's documentation!](#)
 - [Indices and tables](#)

Previous topic

[Welcome to the Mapbender3 documentation](#)

Next topic

[The Book](#)

This Page

[Show Source](#)

Quick search

Enter search terms or a module class



Hands on

Hands on – Part I

- Load WMS
- Create your own Application
- Populate application with Services
- Get elements for your application
- Create user and groups
- Assign application to user and groups
- Assign element access to user and groups

Hands on – Part II

- Print
- Define an individual Design
- Create your own bundle
- Setup a Search module
- Setup a Digitizer module



Mapbender3 Quickstart

- <http://doc.mapbender3.org/en/book/quickstart.html>

element documentation

- <http://doc.mapbender3.org/en/bundles/Mapbender/CoreBundle/index.html>

- <http://osm-demo.wherogroup.com/service?REQUEST=GetCapabilities&Service=WMS&Version=1.3.0>
- http://wms.wherogroup.com/cgi-bin/germany_workshop.xml?VERSION=1.1.1&REQUEST=GetCapabilities&SERVICE=WMS
- **GEOportal.NRW**
<https://www.geoportal.nrw.de/application-geokatalog/start/index.php>
- http://www.wms.nrw.de/geobasis/wms_nw_dtk?SERVICE=WMS&VERSION=1.3.0&Request=getCapabilities
- http://www.wms.nrw.de/geobasis/wms_nw_alkis_gelb?REQUEST=GetCapabilities&Service=WMS&Version=1.3.0
- http://www.wms.nrw.de/geobasis/wms_nw_dop40??SERVICE=WMS&VERSION=1.3.0&Request=getCapabilities



- GDI-DE
- Search earthquake and geology
- http://www.geoportal.rlp.de/mapbender/php/wms.php?inspire=1&layer_id=26216&REQUEST=GetCapabilities&SERVICE=WMS
- <http://www.wms.nrw.de/gd/GK100?REQUEST=GetCapabilities&SERVICE=WMS>



Create your own Application

- Generate an application called FOSS4G
- Switch to tab Layout
- Insert Map-Element in region content
 - SRS EPSG:4326
 - MAX EXTENT Germany
 - Lower left 5 45 – upper right 15 55
 - Start Extent Bonn
 - Lower left 7.07 50.72 - upper right 7.128 50.76



Populate application with Services

- Switch to tab Layersets
- Create a layerset for the main map and a layerset for the overview map
- Add WMS to your layerset
- If necessary configure the services



Add elements to your application

- Find information about the elements in the documentation
- <http://doc.mapbender3.org/en/bundles/Mapbender/CoreBundle/>

Try to integrate some Elements:

- Scaleselect, Navigation Toolbar, Scaledisplay, ShowCoordinates, Overview
- Layertree, Legend, Redlining in the sidepane

Discover more elements

- Find information about the elements in the documentation
- <http://doc.mapbender3.org/en/bundles/Mapbender/CoreBundle/>
- Measure, FeatureInfo, Image Export, LoadWMS
Notice: Some elements need a button to get activated
- HTML element
- BaseSourceSwitcher
- PrintClient

Create user

- Create user foss4g
- User control → User → New User
- Define user name, email and password



Assign application to user

- Application → pen → Application Security
- + → Select user → Give permission **view**
- **Access Control List**

- Test the permission by registering as user foss4g
- Note: You can assign access to single elements

Create a group

- Create a group called **workshop**
- User control → Groups → New Group
- Add your user **foss4g** to the group **workshop**
- Assign an application to your group **workshop**

CSS Editor

- Default style can be overwritten
- Switch to tab css-Editor
- Define a different background color
- Examples:

<http://doc.mapbender3.org/en/book/css.html>



Try the workshop bundle

- Find a workshop bundle at <https://github.com/mapbender/mapbender-workshop>
- <http://doc.mapbender3.org/en/book/templates.html>
- Change the title of the twig file
- Change css parameter in the scss file

Search

- Define search with SearchRouter
- SQL Search
- http://doc.mapbender3.org/en/bundles/Mapbender/CoreBundle/elements/search_router.html
- Setup a database connection in parameters.yml and config.yml
- Define the search form as YAML definition

Digitizer

- Define digitize functionality
- Edit directly on a database table
- YAML definition
- <http://doc.mapbender3.org/en/bundles/Mapbender/CoreBundle/elements/digitizer.html>

Installation

Install Mapbender3 by the download-package

<http://mapbender3.org/en/download>

Or Git-Repositories

<https://github.com/mapbender/mapbender-starter>

Documentation for installation

<http://doc.mapbender3.org>



More about Mapbender3

- <http://mapbender3.org>
- **Mapbender3 Code** <http://github.com/mapbender>
- **Version History**
<http://doc.mapbender3.org/en/book/versions.html>
- **Milestones / Bugtracker**
<https://github.com/mapbender/mapbender/issues>



How can I participate?

- Testing
- Reporting Feedback and Bugs
- Dokumentation
- Translation
- Programming (Git-Code)
- Mailing lists



Thanks you for your attention!

If you have any question please contact us
Astrid Emde (astrid.emde@wherogroup.com)

or

mapbender-users@list.osgeo.org

With the kind support of



WhereGroup

Creative Commons Share Alike License 3.0

Copyright © 2016: Astrid Emde